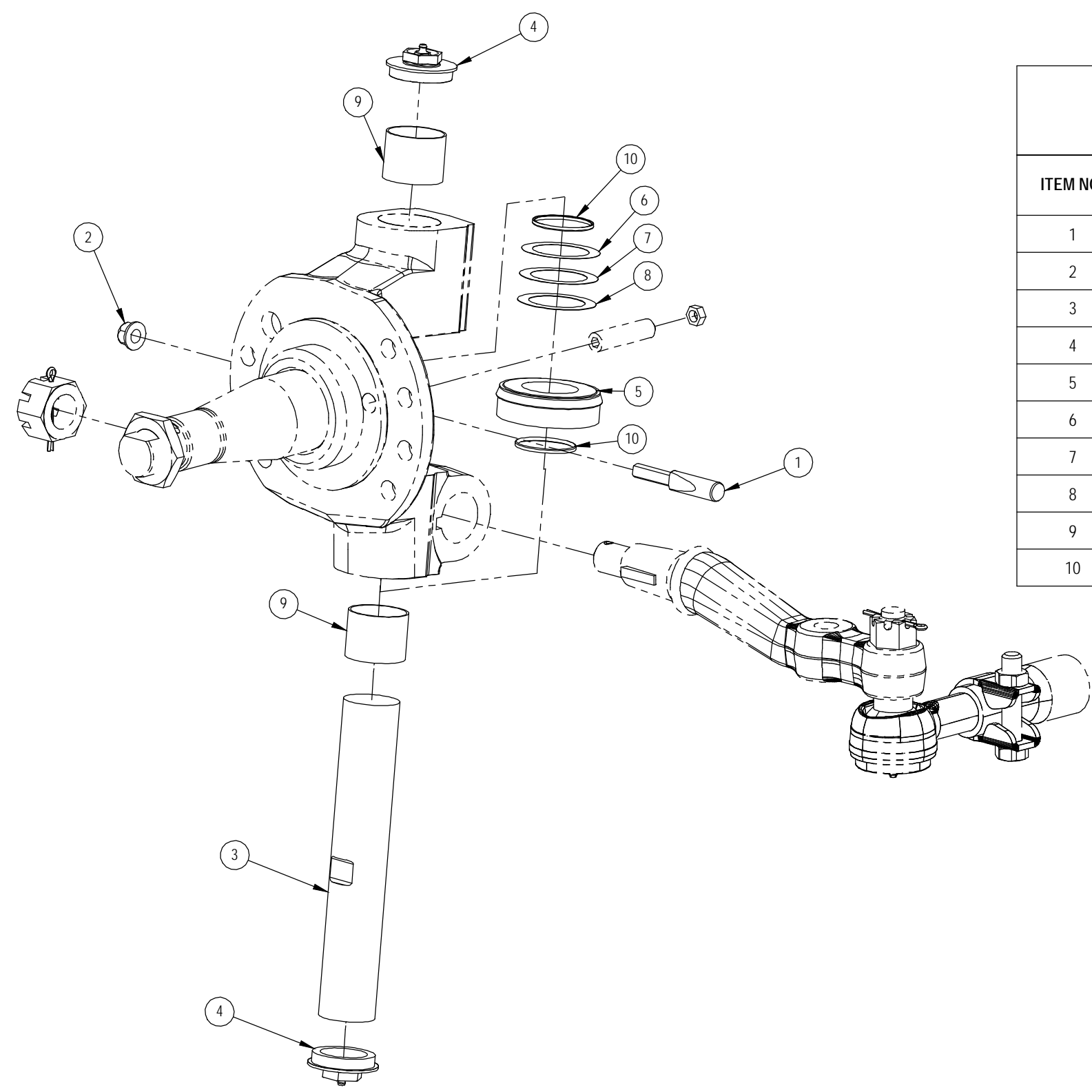



REV.	DESCRIPTION	ECN	DATE	BY
A	NEW DRAWING		08/01/08	DRB
B	ADDED EXPLODED VIEW	C-5687	08/04/08	TLK



SERVICE REPAIR KIT SRK98			KINGPIN REPAIR KIT 13K WESTPORT
ITEM NO.	EXPLODED/QTY.	PART NUMBER	DESCRIPTION
1	1	19495	LOCK PIN LOWER
2	1	19496	NUT LOCK PIN
3	1	19113-006	KING PIN
4	2	19113-007	CAP KING PIN
5	1	19113-011	THRUST BEARING
6	1	19113-013	SHIM .005 (AS REQ'D)
7	1	19113-014	SHIM .010 (AS REQ'D)
8	1	19113-015	SHIM .015 (AS REQ'D)
9	2	19113-027	KING PIN BUSHING (INC. KNUCKLE ASSY)
10	2	19113-028	KING PIN SEAL (INC. KING PIN ASSY)

DEPTS AFFECTED	TOLERANCES (EXCEPT AS NOTED)	DESCRIPTION: KNUCKLE KIT 13K		
-	DECIMAL ± .06	PREVIOUS ASSY: -	SHEET: 1 OF 1	 Watson Suspension Systems
-	FRACTIONAL ± 1/16	SUSPENSION MODEL: SL11X	SCALE: 1:4	
WEIGHT:	ANGULAR ± 1°	DATE: 08/04/2008	DRAWN BY: TLK	SIZE: B
				DRAWING NO: SRK98