

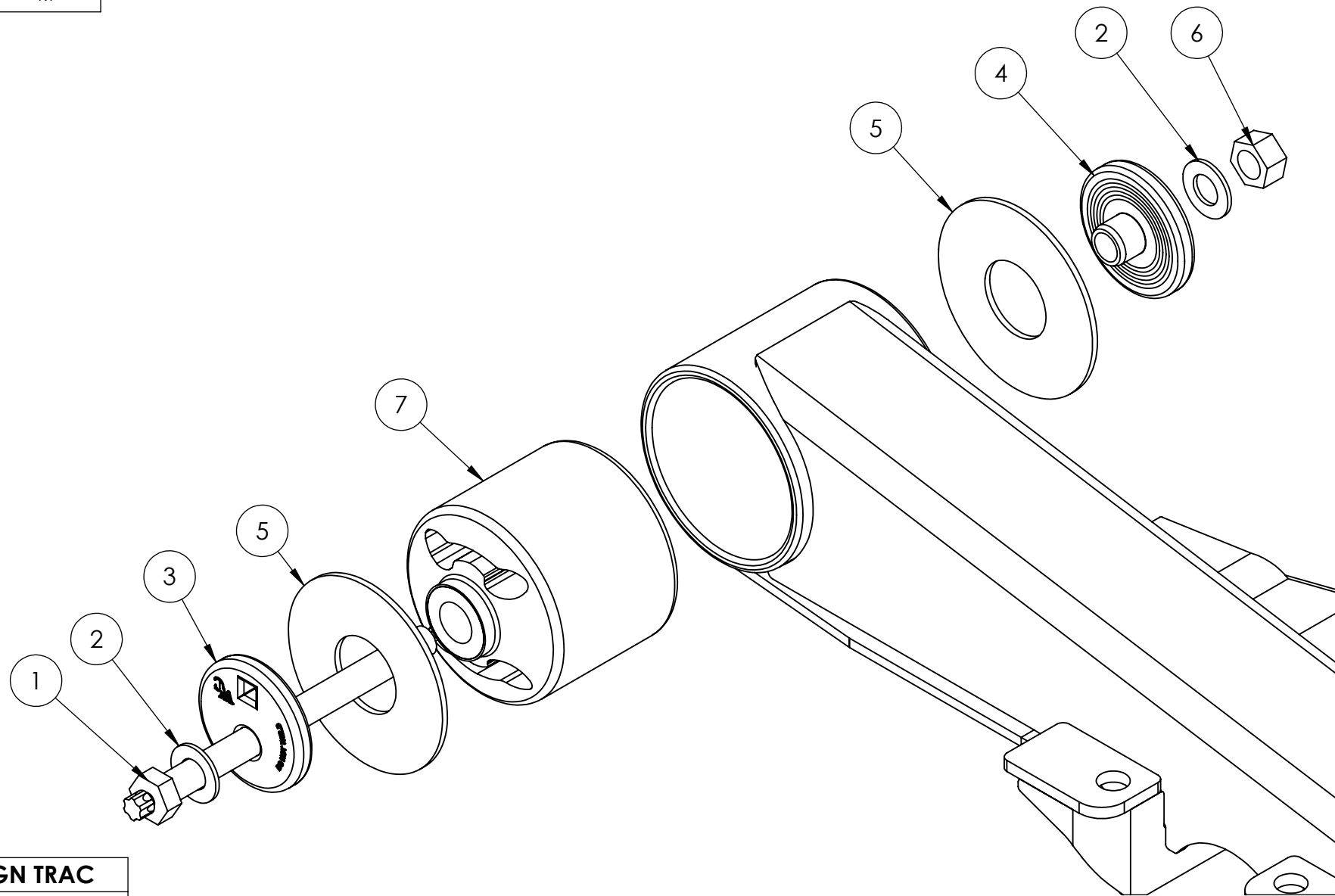
4

3

2

1

REV.	DESCRIPTION	ECO	DATE	BY
A	NEW DRAWING	300119	5/1/2015	RT

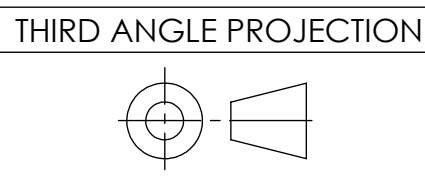


SERVICE REPAIR KIT		TA250/300 V,T&L MAINTENANCE KIT ALIGN TRAC	
ITEM NO.	QTY	PART NUMBER	DESCRIPTION
1	2	B-23582-1	SHEAR-TYPE BOLT
2	4	A-21024	HARDENED STEEL WASHER
3	2	C-20925WC	ECCENTRIC WASHERB2
4	2	C-20924WC	INNER WASHER, FLANGED
5	4	B-11613	HANG. SPACER WASHER (NYLON)
6	2	A-23583	PREVAILING TORQUE HEAVY HEX NUT
7	2	17993-125	BUSHING MULTIFUNCTION
8	1	17993-LUBE	LUBE PACKET FOR BUSHING

ALL WATSON AND CHALIN INTELLECTUAL PROPERTY & PROPRIETARY INFORMATION IS PROTECTED BY U.S. & INTERNATIONAL COPYRIGHT LAWS. ANY USE WITHOUT THE EXPRESS WRITTEN PERMISSION OF WATSON AND CHALIN IS PROHIBITED.

**SPECIAL CHARACTERISTICS SYMBOL LEGEND**  
 >X.XX< W/C CRITICAL DIM (X.XX) FOR REFERENCE ONLY  
 \*\*X.XX DESIGNATES A ±.125 TOL.  
 \*X.XX DESIGNATES A KEY CUSTOMER CHARACTERISTIC

UNLESS OTHERWISE SPECIFIED DIM ARE IN INCHES  
 TOL ON ANGLES ± 1.0°  
 X.X±.1 X.XX±.06 X.XXX±.030  
 INTERPRET DIM AND TOL PER ASME Y14.5-2009



SUSPENSION MODEL: TA  
 DATE: 5/1/2015

PREVIOUS ASSY: -  
 DRAWN BY: R.TABOR

SCALE: 1:8  
 SHEET: 1 OF 1

**WATSON AND CHALIN MANUFACTURING INC**  
 725 EAST UNIVERSITY DRIVE MCKINNEY TEXAS 75069  
 TITLE: NARROW TOP HANGERS METRIC HRDWR (PARAMOUNT)  
 DWG NO: SRKHPPT16120

4

3

2

1

B

B

A

A