

4

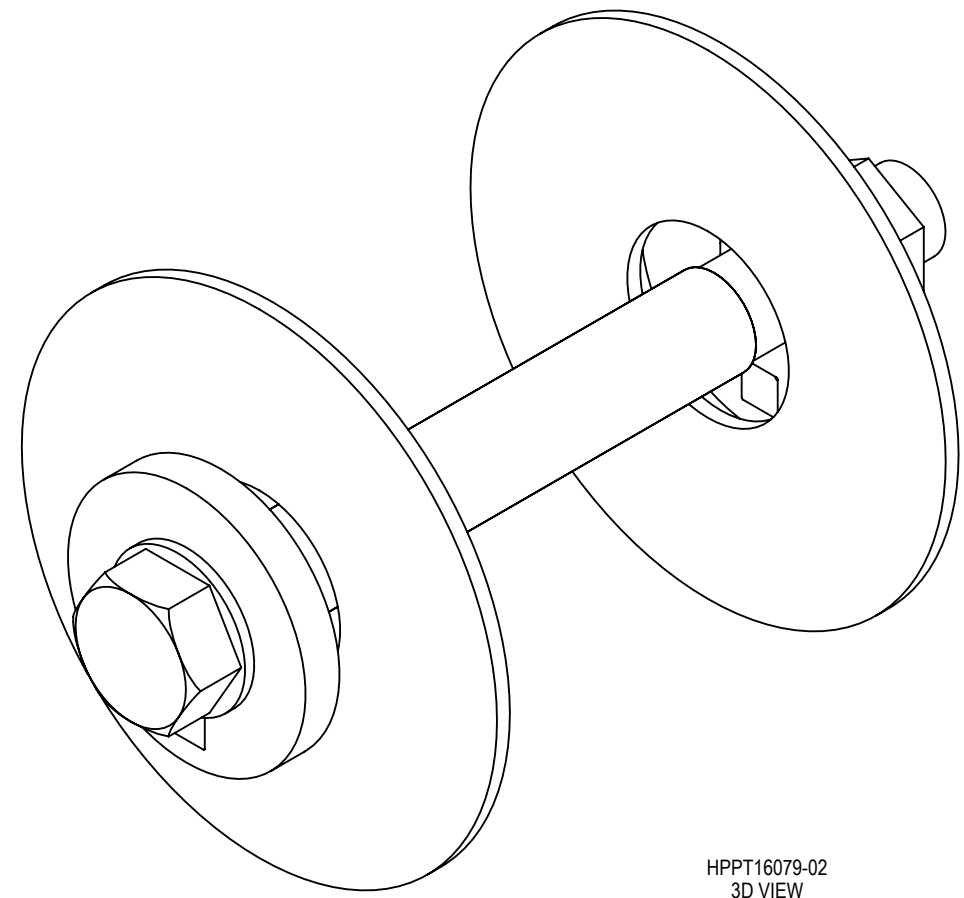
3

2

1

B

B



HPPT16079-02
 3D VIEW
 ENGR REF ONLY
 SCALE: NONE

A

A

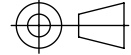
-	-	-	-	-	-
B	UPDATED MODEL AND DRAWING	410102	04/30/2019	GEH	EFR
A	NEW DRAWING	3433	03/26/2014	JS	-
REV.	DESCRIPTION	CN	DATE	DRAWN	CHECK

WATSON AND CHALIN MANUFACTURING INC
 725 EAST UNIVERSITY DRIVE, MCKINNEY, TEXAS 75069

UNLESS OTHERWISE SPECIFIED
 DIMENSIONS ARE IN INCHES
 ANGLES ± 1.0° | X.X ± 0.1 | X.XX ± 0.06 | X.XXX ± 0.030
 INTERPRET DIMENSIONS AND
 TOLERANCES PER ASME Y14.5-2009

ALL WATSON AND CHALIN INTELLECTUAL PROPERTY & PROPRIETARY
 INFORMATION IS PROTECTED BY U.S. & INTERNATIONAL COPYRIGHT
 LAWS. ANY USE WITHOUT THE EXPRESS WRITTEN PERMISSION OF
 WATSON AND CHALIN IS PROHIBITED.

THIRD ANGLE PROJECTION
 PER ASME Y14.3-2013



DESCRIPTION:
TI/TA COLLAR PACK

DWG NO.: **HPPT16079-02**
 DATE: 3/26/2014 | SHEET NO.: 1 OF 2 | SHEET SCALE: NTS | SHEET SIZE: B

4

3

2

1

4

3

2

1

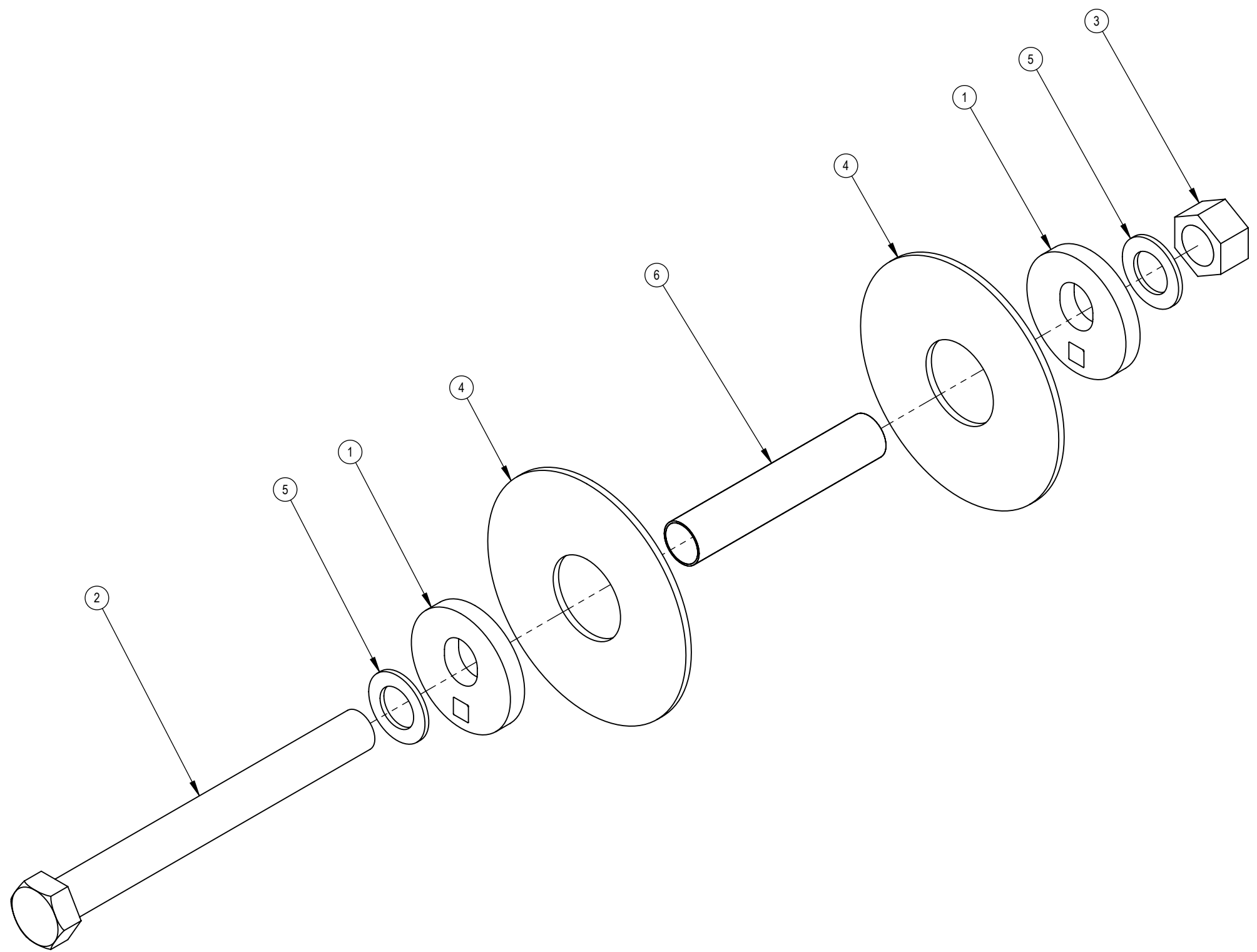
TABLE 1			
ITEM NO.	MAKE FROM	DESCRIPTION	HPPT16079-02
1	17234	PIVOT COLLAR	4
2	17269	CAPSCREW 1.12-12 10.50"	2
3	10023	NUT LOCK 1.12 NF GR C	2
4	17183	HANG. SPACER WASHER (NYLON)	4
5	10045	WASHER, FLAT 1.19X2.00	4
6	A-2068-1	LINER	2
WEIGHT			16.06

B

B

A

A



4

3

2

1

WATSON AND CHALIN MANUFACTURING INC
 725 EAST UNIVERSITY DRIVE, MCKINNEY, TEXAS 75069

UNLESS OTHERWISE SPECIFIED DIMENSIONS ARE IN INCHES

ANGLES	X.X	X.XX	X.XXX
± 1.0°	± 0.1	± 0.06	± 0.030

INTERPRET DIMENSIONS AND TOLERANCES PER ASME Y14.5-2009

THIRD ANGLE PROJECTION PER ASME Y14.3-2013

ALL WATSON AND CHALIN INTELLECTUAL PROPERTY & PROPRIETARY INFORMATION IS PROTECTED BY U.S. & INTERNATIONAL COPYRIGHT LAWS. ANY USE WITHOUT THE EXPRESS WRITTEN PERMISSION OF WATSON AND CHALIN IS PROHIBITED.

DESCRIPTION: **TI/TA COLLAR PACK**

DWG NO.: **HPPT16079-02**

DATE: 3/26/2014	SHEET NO.: 2 OF 2	SHEET SCALE: 1:4	SHEET SIZE: B
-----------------	-------------------	------------------	---------------